

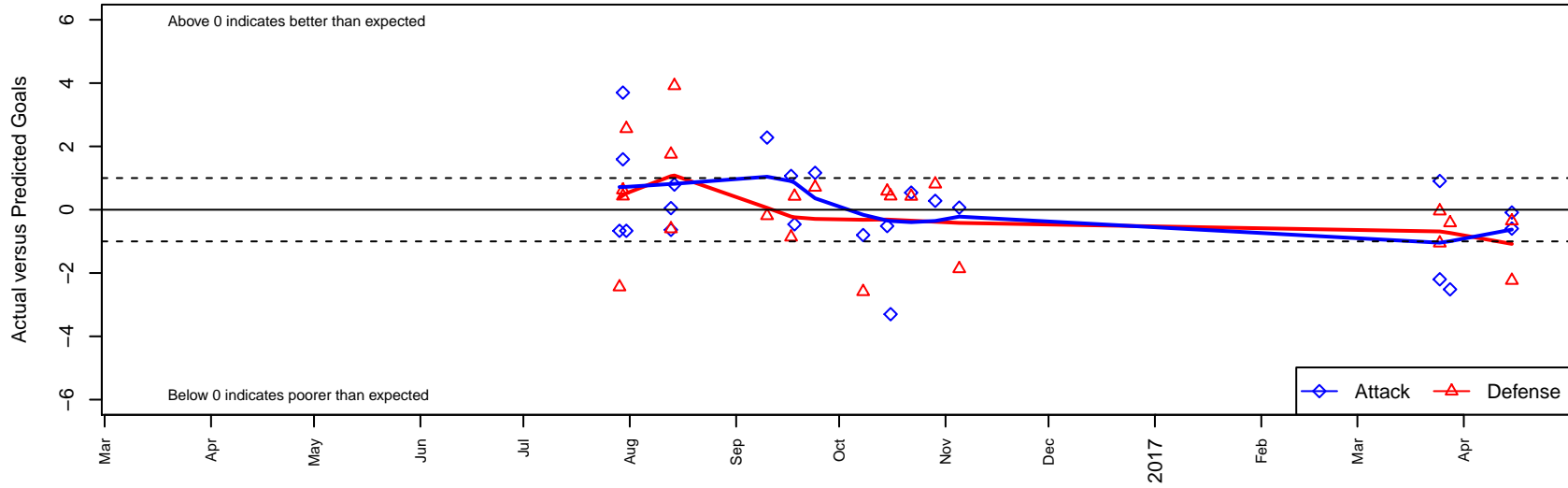
ASE Royal G04

Academy of Soccer Excellence
 Pasco, WA
 G04 total strength=748
 attack=1.19 defense=0.58
 fall league = PSPL–Inland Copa 1 South U13
 spr league = Spr PSPL–Inland Copa Classic U
 notes= Nunez 2015

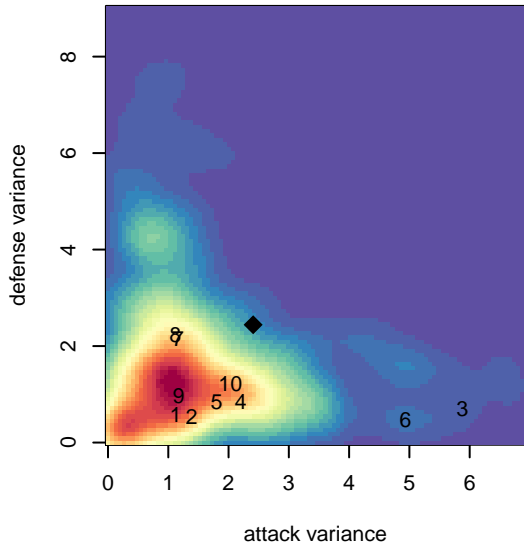
alt names used:
 ASE G04 ROYAL
 ASE G04 ROYAL (WA)
 ASE Royal–Harrington
 ASE Royal–Harrington

Venues played:
 2016 River City Cup U13 (2004) U13
 2016 Central WA Super Cup U13 Gold
 2016 PSPL–Inland Copa 1 South U13
 2016 Spr PSPL–Inland Copa Classic U13

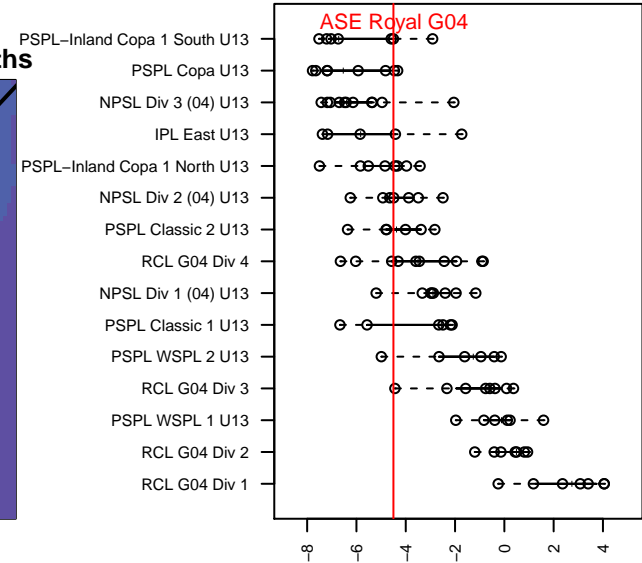
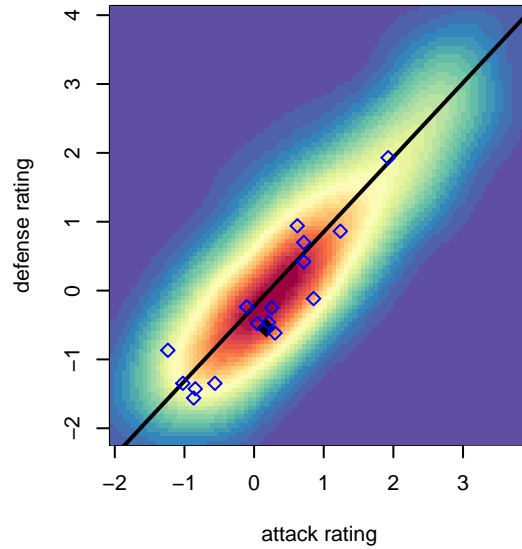
ASE Royal G04
 Dots are actual minus expected GF (blue circles) and GA (red triangles).
 Blue line is smoothed change in attack strength. Red is smoothed change in defense strength.



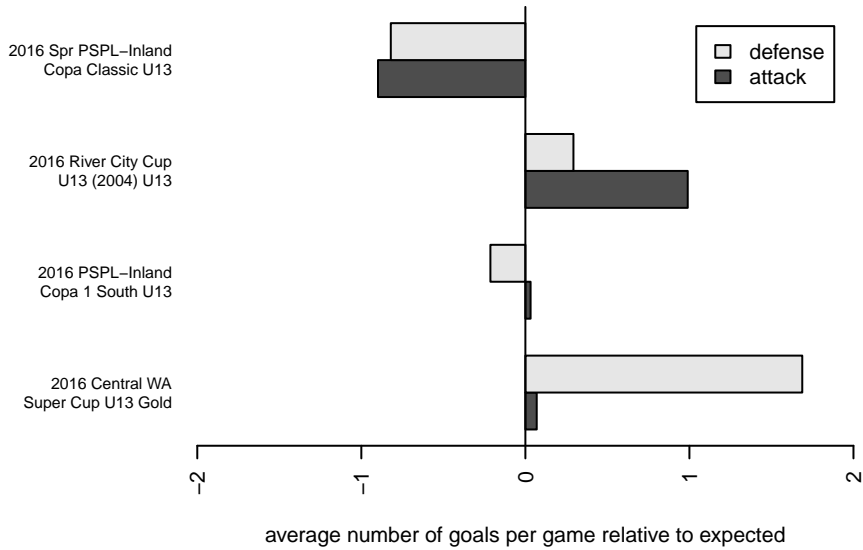
**attack and defense variance (black dot)
relative to other teams
and top 10 in region**



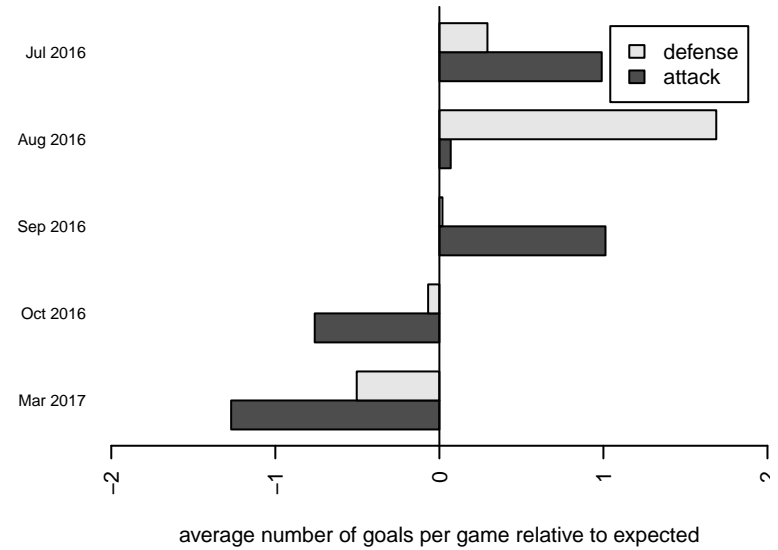
**attack and defense rating
relative to others at age
and all opponents in last 13 months**



Performance relative to 13 month average



Performance relative to 13 month average



| date | home | | away | | venue | pred.home | pred.away |
|-------------|------------------------------------|---|------------------------------------|----|---------------------------------------|------------------|------------------|
| 017-04-15 | Sting SC Timbers Red G04 | 5 | ASE Royal G04 | 0 | 2016 Spr PSPL-Inland Copa Classic U13 | 2.77 | 0.60 |
| 017-04-15 | Spokane Foxes Kropp G04 | 2 | ASE Royal G04 | 2 | 2016 Spr PSPL-Inland Copa Classic U13 | 1.64 | 2.09 |
| 017-03-28 | ASE Royal G04 | 0 | Three Rivers SC Green G04 | 2 | 2016 Spr PSPL-Inland Copa Classic U13 | 2.52 | 1.58 |
| 017-03-25 | ASE Royal G04 | 3 | Spokane Scotties Snell G04 | 2 | 2016 Spr PSPL-Inland Copa Classic U13 | 2.09 | 1.96 |
| 017-03-25 | ASE Royal G04 | 0 | Valor Maroon Hardy G04 | 3 | 2016 Spr PSPL-Inland Copa Classic U13 | 2.20 | 1.95 |
| 016-11-05 | Valley Thunder SC G04 | 5 | ASE Royal G04 | 1 | 2016 PSPL-Inland Copa 1 South U13 | 3.13 | 0.93 |
| 016-10-29 | ASE Royal G04 | 6 | Walla Walla United SC Strikers G04 | 0 | 2016 PSPL-Inland Copa 1 South U13 | 5.72 | 0.81 |
| 016-10-22 | ASE Royal G04 | 4 | Blue Mountain Timbers G04 | 0 | 2016 PSPL-Inland Copa 1 South U13 | 3.46 | 0.42 |
| 016-10-16 | CWSA Grey G04 | 0 | ASE Royal G04 | 3 | 2016 PSPL-Inland Copa 1 South U13 | 0.43 | 6.30 |
| 016-10-15 | ASE Royal G04 | 2 | Three Rivers SC Green G04 | 1 | 2016 PSPL-Inland Copa 1 South U13 | 2.52 | 1.58 |
| 016-10-08 | Endeavour Soccer Academy G04 | 6 | ASE Royal G04 | 1 | 2016 PSPL-Inland Copa 1 South U13 | 3.41 | 1.80 |
| 016-09-24 | ASE Royal G04 | 7 | CWSA White G04 | 0 | 2016 PSPL-Inland Copa 1 South U13 | 5.84 | 0.71 |
| 016-09-18 | Blue Mountain Timbers G04 | 0 | ASE Royal G04 | 3 | 2016 PSPL-Inland Copa 1 South U13 | 0.42 | 3.46 |
| 016-09-17 | ASE Royal G04 | 2 | Valley Thunder SC G04 | 4 | 2016 PSPL-Inland Copa 1 South U13 | 0.93 | 3.13 |
| 016-09-10 | Walla Walla United SC Strikers G04 | 1 | ASE Royal G04 | 8 | 2016 PSPL-Inland Copa 1 South U13 | 0.81 | 5.72 |
| 016-08-14 | FPSC Fury Black G04 | 5 | ASE Royal G04 | 1 | 2016 Central WA Super Cup U13 Gold | 8.92 | 0.21 |
| 016-08-13 | ASE Royal G04 | 0 | MRFC Blue G04 | 2 | 2016 Central WA Super Cup U13 Gold | 0.64 | 3.75 |
| 016-08-13 | RSA Elite G04 | 2 | ASE Royal G04 | 2 | 2016 Central WA Super Cup U13 Gold | 1.40 | 1.95 |
| 016-07-31 | Spokane Sounders B G04 | 1 | ASE Royal G04 | 0 | 2016 River City Cup U13 (2004) U13 | 3.56 | 0.67 |
| 016-07-30 | FC Spokane Black Clayton G04 | 0 | ASE Royal G04 | 6 | 2016 River City Cup U13 (2004) U13 | 0.62 | 4.41 |
| 016-07-30 | CWSA Grey G04 | 0 | ASE Royal G04 | 10 | 2016 River City Cup U13 (2004) U13 | 0.43 | 6.30 |
| 016-07-29 | Spokane Sounders B G04 | 6 | ASE Royal G04 | 0 | 2016 River City Cup U13 (2004) U13 | 3.56 | 0.67 |